

Stair Risers

Brought to you by the Kerfkore Company.



The Kerfkore Company now offers a stair riser that is made from its Kerfkore product line.

The Stair Risers are available in either single or double nosed.

The standard riser comes in a 8" wide (step height) so that it can be ripped down to match the needed step rise height.

The Stair Risers are available in a variety of veneers including red oak, pine and maple veneer.

A variety of substrates can be used as the core product such as plywood, particleboard and MDF. The most popular core used is particle board.

The fabricator can add dado cuts to position the shaping robs and obtain the exact radius or shape required.



Standard sizes in stock include:

Single End 59" x 8"

Double End 96" x 8"

Double End 104" x 8"

Single End 120" x 8"

Special Single End 96" x 8"

Additional veneers and special sizes can also be created and require custom pricing by the manufacturing plant.

All Stair Risers will be shipped flat. Minimum order size is 25 risers. Veneers can be different on different risers.

For more information of product samples, please call 800-637-3539.

THE KERFKORE[®] COMPANY

The Kerfkore Company, A Division of Interior Products, Inc.

2630 Sidney Lanier Drive, Brunswick, GA 31525

912-264-6496 phone

912-262-9763 fax

800-637-3539 toll free

www.thekerkorecompany.com info@kerfkore.com

Product Description

The riser is constructed with a veneer face and different core options. The riser is designed for use on starting step applications where a bull nosed end is desired to provide a platform to mount the tread and the banister railing.

Product Characteristics

This riser is available in an 8" height with bendable end/ends to form the needed radius. The height can be reduced by edging on a table saw to a smaller width if needed. The product is shipped flat and by the use of a shaping rib can be bent and shaped into the desired form.

Assembly Methods

The riser is formed into the desired contour by the use of a curved forming rib. This rib should be machined to the correct shape and the riser then applied to this rib. Sometimes the use of a dado or rabbet is used to locate this rib for attachment. The rib should be glued, clamped and possibly pin nailed into place until dry.

Bending Capabilities

The product is designed to form a maximum diameter of 13" or it can be bent down to a 8" diameter if needed. This diameter is determined by the size of the bull nose needed for the particular application

Face Treatments

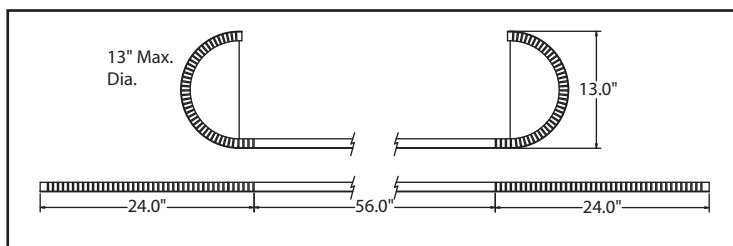
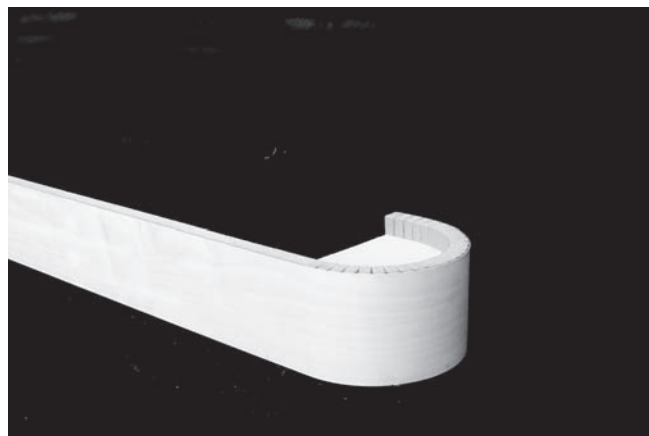
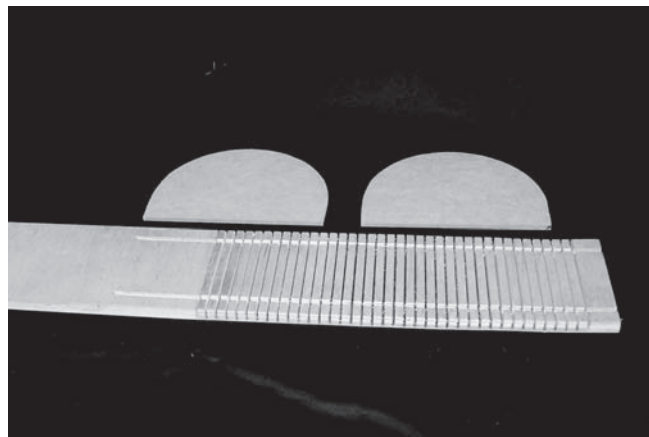
The following veneer faces are available: Oak, Maple, Cherry and Mahogany.

Core Materials

Particleboard is the standard core material. Optional core materials include plywood and MDF.

Handling and Storage

Care should be taken in handling all materials. The length of the riser may require two people to safely transport the material. Always pick up the riser with the ribs on the bottom so the panel will bend towards the intended curve. Bending opposite from the intended shape is not recommended. Always practice good storage methods by keeping flat until needed.



THE KERFKORE[®] COMPANY

The Kerfkore Company
A division of Interior Products, Inc.
2630 Sidney Lanier Drive, Brunswick, GA 31525
912-264-6496 phone
912-262-9763 fax
800-637-3539 toll free
www.thekerfkorecompany.com info@kerfkore.com